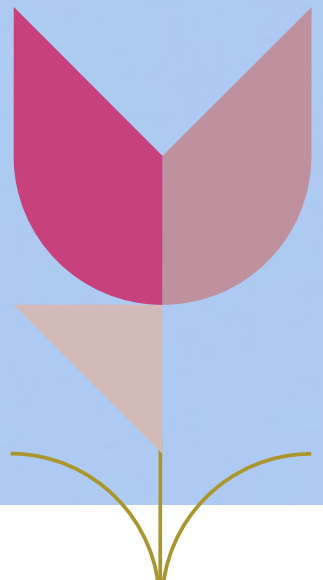


Part four



Glossary





Glossary

.....

| | |
|---|--|
| Agroforestry | A land-use system that integrates trees and shrubs into farming systems. |
| | |
| Ancient Semi-Natural Woodland (AWNW) | Ancient semi-natural woodland (ASNW) is where the stands are composed predominantly of trees and shrubs native to the site that do not obviously originate from planting. However, woodlands with small planting of trees native to the site would still be included in this category. The stands may have been managed by coppicing or pollarding in the past or the tree and shrub layer may have grown up by natural regeneration. |
| | |
| Arable reversion | The process of converting land previously used for arable (crop) farming back to semi-natural habitats such as grassland, heathland, or woodland. It is often used to restore biodiversity, improve soil health, and support nature recovery efforts. |
| | |
| Areas of Particular Importance for Biodiversity (APIBs) | Within the Warwickshire Local Nature Recovery Strategy (LNRS), these are areas already recognised as being of particular importance for biodiversity. They include sites for nature and irreplaceable habitats that are protected through local, national, or international designations—such as Local Wildlife Sites, Sites of Special Scientific Interest (SSSIs), and ancient woodlands. These areas form a vital foundation for nature recovery across the county. |
| | |
| Areas that Could become of particular importance for Biodiversity (ACBs) | As part of the LNRS process in Warwickshire, we've identified and mapped areas that could become particularly important for biodiversity. These are places where targeted actions for nature recovery are likely to have the greatest impact, helping to restore habitats, support species, and strengthen ecological networks across the county. |
| | |
| Biodiversity | Variety of all living organisms ranging from the genes of an individual to entire ecosystems and biospheres. |
| | |
| Biodiversity net gain | Approach to land development and management that holds developers accountable for contributing to the net gain of biodiversity. |
| | |
| Carbon Market | Market dedicated to the trading of carbon emission allowances to promote fewer carbon dioxide emissions by improving awareness. |
| | |
| Carbon sequestration | Uptake/ storage of carbon e.g. absorption of carbon dioxide in plants through natural processes like photosynthesis. |
| | |
| Climate Change | A pattern of change in response to natural processes or human activity on global and region climates. |
| | |

.....

Climate Resilience The ability of a system—such as a community, ecosystem, or economy—to anticipate, prepare for, respond to, and recover from the impacts of climate change. It involves adapting to climate risks while maintaining essential functions and minimising long-term damage.

.....

Ecological resilience The capacity of an ecosystem to absorb disturbances— such as extreme weather, pollution, or human activity— while maintaining its essential structure, functions, and processes. A resilient ecosystem can recover from disturbance events and continue to support biodiversity and ecosystem services.

.....

Ecosystem services Direct and indirect ways that humans benefit from the natural environment.

.....

Green infrastructure Integration of innovative multi-functioning greenspaces within a community whether that be rural or urban. For example, community gardens.

.....

Habitat Biodiversity Audit (HBA) Now known as the Natural Capital Assessment Partnership (NCAP). Please see below.

.....

Habitat Fragmentation The process by which large, continuous habitats are broken into smaller, isolated patches, often due to human activities like agriculture, urban development, or road construction. It reduces biodiversity, disrupts wildlife movement, and weakens ecosystem resilience.

.....

Husbandry The practice of farming, including cultivation of soil, raising livestock, and other agricultural practices.

.....

Intensive farming A type of agriculture that involves intensive use of inputs, such as fertilisers, pesticides, and machinery, to maximize output.

.....

Natural Capital Economic metaphor of linking the value of living and non-living aspects of ecosystems to that of stock.

.....

Established in 1995 and formerly known as the Habitat Biodiversity Audit (HBA), the Natural Capital Assessment Partnership (NCAP) has collected and collated over 25 years of habitat data.

Natural Capital Assessment Partnership (NCAP) With its primary remit being habitat mapping and conservation, NCAP data covers the vast majority of Warwickshire. It offers comprehensive and continuously updated habitat data through 'Phase 1 surveying', which is crucial for tracking habitat changes, identifying connectivity opportunities, and supporting wildlife movement. Additionally, NCAP manages Local Wildlife Sites (LWS).

.....



| | |
|--|---|
| Natural capital assets | All the environmental factors and natural resources e.g. rain, sun, biodiversity that is needed to provide marketable goods or environmental benefits. |
| Natural capital depletion | Increase of capital gain and standards of living at the expense of natural capital. |
| Natural capital investment | The allocation of financial resources into the protection, restoration, or sustainable management of natural assets—such as forests, wetlands, rivers, soils, and biodiversity—with the goal of generating both environmental and economic returns. |
| Natural capital stocks and flows | Flows of services from stocks of natural capital that overtime provide marketable goods, or positive interactions between an individual and their ecosystem (from water purification to recreational benefits). |
| Nature Based Solutions | Using nature as a technique to help solve environmental issues |
| Nature Markets | Private investment into nature by funding ecological services for example restoration projects. |
| Nature Rich | A setting, whether urban or rural, characterised by a high density and diversity of biological life and natural features. |
| Net Zero | Equal balance between carbon dioxide emissions and mitigation, so there is no overall net gain or loss. |
| Non-Government Organisations (NGOs) | Independent entities that operate separately from government control. They are typically non-profit organisations focused on addressing social, environmental, cultural, or humanitarian issues. NGOs can work locally, nationally, or internationally, and they often rely on donations, grants, and volunteers to carry out their missions. |
| Nutrient cycling | The natural process by which essential nutrients (like nitrogen, phosphorus, and carbon) are transferred between living organisms and the environment, supporting ecosystem health and productivity. |
| Open Mosaic Habitat | A unique type of habitat predominantly found on brownfield sites, consisting of a complex mix of unvegetated or sparsely vegetated surfaces interspersed with more densely vegetated areas. This creates a dynamic 'mosaic' of habitats that can support a diverse range of species. Open Mosaic Habitats (OMH) are recognised for their high ecological value. |
| Pictorial Meadows | A type of designed flower meadow that focuses on creating a visually striking, colourful display rather than replicating a traditional wildflower meadow. It typically consists of a carefully selected mix of annual and perennial flowering plants chosen for their vibrant colours, long blooming periods, and aesthetic appeal. |

Planetary boundaries

A scientific framework outlining nine environmental limits within which humanity can safely operate. Breaching these boundaries (e.g., climate change, biodiversity loss) risks destabilising Earth's systems.

Plantation on Ancient Woodland Sites (PAWS)

Plantations on ancient woodland sites (PAWS, also known as ancient, replanted woodland). These are areas of ancient woodland where the former native tree cover has been felled and replaced by planted trees, predominantly of species not native to the site. These will include conifers such as Norway spruce or Corsican pine, and also non-native broadleaves such as sweet chestnut. These sites often retain some ancient woodland features such as soils, ground flora, fungi, and woodland archaeology – and they can respond well to restoration management.

Range Shifts

The movement of species and habitats in response to climate change, involving shifts to higher latitudes or elevations to maintain suitable climate conditions.

Responsible Authority

The designated public body appointed by the Secretary of State for Environment, Food and Rural Affairs to lead the preparation, publication, and maintenance of a Local Nature Recovery Strategy (LNRS) within a defined area in England. This authority is typically a local authority, combined authority, or the Mayor of London, depending on the region. The responsible authority is tasked with coordinating stakeholders, gathering evidence, and developing strategic plans to enhance biodiversity and support nature recovery at the local level.

Ridge and Furrow

An ancient ploughing technique for cultivating arable land, depicting the raised earth banks and intervening depressions that result from prolonged ploughing activities.

Scheduled Monument

A nationally important archaeological site or historic building that has been given legal protection by the government. In the UK, this designation is made under the Ancient Monuments and Archaeological Areas Act 1979.

Silage

A fodder crop (such as grass or clover) preserved in airtight conditions, typically in a silo.

Social Accountability

The mechanisms through which the public and civil society organisations hold authorities and other responsible parties accountable for their actions. This is achieved through participation, engagement, and collective mobilisation.

¹Natural England (2025) Social accountability for place-based nature recovery (NECR585) [\[https://publications.naturalengland.org.uk/publication/4568060193931264\]](https://publications.naturalengland.org.uk/publication/4568060193931264)



| | |
|--|--|
| Spring topping | A land management practice typically used in grassland, heathland, or conservation areas to control the growth of certain plants – especially coarse grasses, bracken, or early-flowering species—without completely removing vegetation. It helps maintain open habitats for ground-nesting birds, pollinators, and a variety of invertebrates by promoting plant diversity. |
| Stocking density | The number of animals kept per unit area of land, typically expressed as animals per hectare. It influences grazing pressure, pasture health, and animal welfare, and is a key factor in sustainable land management. |
| Strategic Area | The defined geographic boundary within which a Local Nature Recovery Strategy (LNRS) is developed. Each strategic area is assigned a responsible authority and is designed to ensure full national coverage without overlaps or gaps. It serves as the spatial framework for identifying local biodiversity priorities, mapping valuable habitats, and planning targeted actions to support nature recovery. |
| Supporting Authority | A public body that must be involved in the preparation of a LNRS, though it is not the lead organisation. This includes Local Planning Authorities (LPAs), Environment Agency, Forestry Commission, and Natural England. Supporting authorities are required to collaborate with the responsible authority to help shape the strategy, ensure it aligns with local priorities, and contribute relevant data, expertise, and feedback throughout the process. |
| Sustainable development goals (SDGs) | A set of 17 global goals adopted by the United Nations to end poverty, protect the planet, and ensure peace and prosperity for all by 2030. They cover areas such as health, education, climate action, and economic growth. |
| Sustainable Urban Drainage Systems (SUDS) | A set of water management practices designed to mimic natural drainage processes in urban areas. SuDS help manage surface water runoff, reduce flood risk, improve water quality, and enhance biodiversity by using features like permeable surfaces, swales, green roofs, and wetlands. |
| Vegetative succession | The process of gradual change in plant and animal communities in an area over time. |
| Wetland | An area of land where water covers the soil or is present near the surface for part or all of the year. |

Acronyms

| | |
|--------------|---|
| ACB | Areas that Could become of particular importance for Biodiversity |
| APIB | Areas of Particular Importance for Biodiversity |
| ASNW | Ancient semi-natural woodland |
| EIP | Environmental Improvement Plan |
| HBA | Habitat Biodiversity Audit |
| LNR | Local Nature Reserve |
| LNRS | Local Nature Recovery Strategy |
| NCAP | Natural Capital Assessment Partnership |
| NCA s | National Character Areas |
| NGOs | Non-Government Organisations |
| NIA | Nature Improvement Area |
| OMH | Open Mosaic Habitat |
| PAWS | Plantation on Ancient Woodland Site |
| RA | Responsible Authority |
| SAC | Special Area of Conservation |
| SSSI | Site of Special Scientific Interest |
| SUDS | Sustainable Urban Drainage Systems |



Appendix A

Governance and Structure LNP Chair

Warwickshire County Council is the principal owner of the Warwickshire LNRS having been appointed by the Secretary of State to oversee its preparation. The County may review or republish the Warwickshire LNRS although the SoS may also, by regulations, make provision about the procedure to be followed in any review and republication. The County with District and Borough Councils of Warwickshire have adopted the Warwickshire LNRS as one of their core strategies. The County, Borough and District authorities have asked the Warwickshire, Coventry & Solihull Local Nature Partnership (WCS LNP) to be the lead delivery organisation to promote and enact the strategy.

Warwickshire Coventry & Solihull Local Nature Partnership

The WCS LNP was established in 2012 following the Government commitment within the Natural Environment White Paper to strengthen local action for nature. As defined by Defra, the LNP's purposes are to:

- Drive positive change in the local natural environment, taking a strategic view of the challenges and opportunities involved and identifying ways to manage it as a system for the benefit of nature, people and the economy.
- Contribute to achieving the Government's national environmental objectives locally, including the identification of local ecological networks, alongside addressing local priorities.
- Become local champions influencing decision-making relating to the natural environment and its value to social and economic outcomes.

The WCS LNP vision is to create a region where

"The natural, historic, urban, and farmed environments are in a vibrant condition that enables the economy, nature and people to thrive. A place where everyone is empowered to reverse wildlife losses and create beneficial connections with nature and where nature can flourish in a stable climate."

The WCS LNP board comprises of single representatives from key sectors of the community. These include Unitary Authorities, County/District/Borough Authorities, Health, Landowners, Farming, Community, Education, Business and Government Agencies, Environmental non-Government Agencies. Amongst other duties, the role of a representative is to act as an ambassador for nature and oversee mechanisms to deliver the Warwickshire LNRS objectives and actions that fall within their influence.

Figure 2 : Membership sectors of the Warwickshire Local Nature Partnership and that of the LNRS Working Group during the formation of the Warwickshire LNRS (2023–April 2026).

